



COMMERCIAL TRUCK SOLUTIONS

COOPER STANDARD
INDUSTRIAL & SPECIALTY GROUP

INNOVATIVE VEHICLE COMPONENTS

Cooper Standard Industrial & Specialty Group (ISG) provides solutions that help commercial vehicle customers meet increasing fuel efficiency requirements and emission regulations, while reducing total cost of operation.

Our team of experts understands EPA mandates and customer demands for a productive vehicle. We bring our design and engineering leadership to solve these issues.

Cooper Standard ISG offers advanced thermal management systems, from complete systems to individual products, as well as the connection systems that link these products.

Benefits of Our Designs

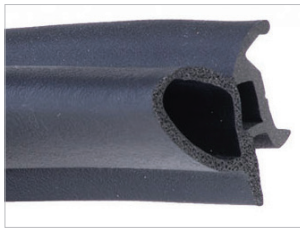
- Reduced Operating Costs
- Diminished Cab Noise
- Improved Operator Comfort, Safety and Performance

SEALING

Cooper Standard ISG provides extruded and molded sealing components for various areas of commercial trucks. We offer materials including EPDM, TPV and other

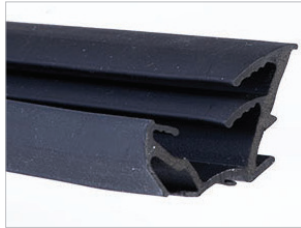
engineered polymers. Our lightweight sealing systems ensure a reliable seal for vehicle compartments and enhance the system’s appearance.

EPDM Microdense



An EPDM material innovation enabling lighter weight dynamic weather seals without compromising mechanical integrity.

TPV Microdense



Used in non-functional areas to reduce weight in the overall sealing system, while maintaining performance.

FlushSeal™ System



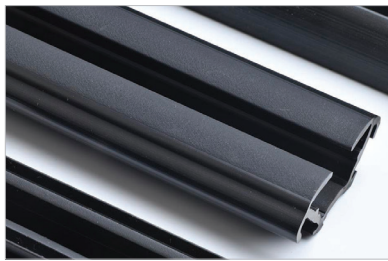
An advanced integrated solution that improves vehicle appearance and aerodynamics with an innovative seal design.

ODS Offerings



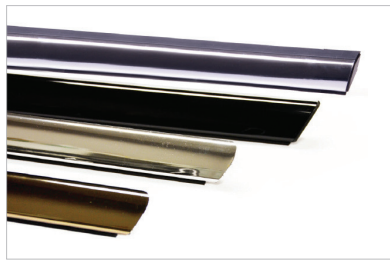
Creative obstacle detection sensor (ODS) system designs to meet aesthetic and functional requirements.

Fortrex™ Elastomer



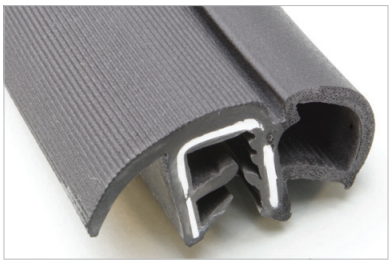
A lightweight elastomer that offers superior sealing, weatherability, NVH and gloss performance.

Decorative Trim



Decorative co-extrudable materials and films that provide cost-effective design options to address vehicle styling needs.

Tex-A-Fib



An innovative material solution offering improved durability and a lower cost alternative to cloth covered trim lips.

FLUID TRANSFER

Rely on Cooper Standard ISG’s fluid transfer systems to provide complete solutions for commercial vehicles. Components are available in various material options,

including metallic, nylon and rubber, to meet customer-specific needs. Our fluid transfer products can reduce weight and improve serviceability of truck systems.

ArmorHose™



An integrated hose construction with an abrasion resistant outer layer which can help eliminate the need for protective sleeves.

ArmorHose™ TPV



A second generation ArmorHose™ design that utilizes global TPV material yielding a lightweight end-to-end abrasion resistance.

LightHose™



A highly versatile light hose that utilizes global TPV material yielding lightweight, low conductivity and high flexibility.

Easy-Lock™ Quick Connect



This evolutionary design improves single-push-to-lock quick connections and improves service removal, no tool required.

Gen III Posi-Lock™ Quick Connect



A double-lock quick connector design that offers an enhanced connection with ease of assembly and improved serviceability.

VDA Quick Connect



VDA style quick connector with a dual-purpose fitting to accommodate new overmolded ring or metal press ring.

Charge Air Cooler Hose



Durable assemblies designed to meet a wide range of temperature, pressure and chemical compatibility requirements.



Scan the QR code to learn more or visit cooperstandard-isg.com/commercial-truck

FUEL & BRAKE DELIVERY

Cooper Standard ISG's fuel & brake delivery systems provide complete solutions for commercial trucks.

Our fuel and brake delivery systems offer superior strength and reliability for the transfer of critical fluids.

Hydraulic Brake Hose



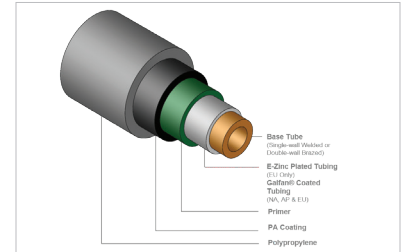
Offers high durability, low volumetric expansion and flexibility for brake hose assemblies.

MagAlloy™ Metal Coating



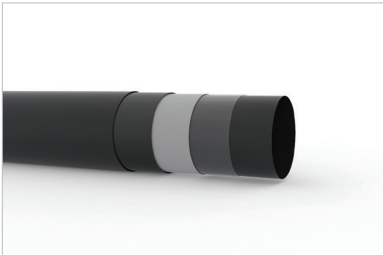
A next generation metal coating process that improves longevity of transportation tubing applications.

Nyclad Pro Coating



An integrated coating that provides full length tube protection while eliminating secondary sleeves.

Low Permeation Multi-Layer Tube



A multi-layer tube construction that provides excellent permeation and temperature resistance with near-zero oligomers.

Gen III Posi-Lock™ Quick Connect



A double-lock quick connector design that offers an enhanced connection with ease of assembly and improved serviceability.

Fuel Rails & HP Lines



Our world-class manufacturing and engineering teams design and develop state-of-the-art, safety-focused fuel injection technologies.

Resonator



A broadband and high frequency noise reduction technology for gasoline and diesel turbo charged engines.

3D Molded Ducts



A precisely molded technology with uniform wall thickness, offering weight reduction for turbo charged systems.